

SmartPIN™ B100

PCI 3.x Certified Modular PIN Entry Device

Encrypted PIN Entry for POS

SmartPIN B100 is a PCI 3.x certified PED (PIN Entry Device) designed for outdoor unattended POS operations where encrypted PIN entry is required.

Applications

SmartPIN B100 can be used in Automatic Teller Machines (ATM), fuel dispensers, kiosks, vending machines, and other POS systems that accept credit and debit payments.

A Secure and Rugged PED

SmartPIN B100 is PCI compliant and certified for the highest degree of PIN security. TDES is used for encryption. Master/Session & DUKPT are used for key management. SmartPIN B100 is robust and vandal resistant. The keys are waterproof for splashed, spilled, & direct liquid spray. The molded metal body and stainless steel cover, along with metal engraved keys, allow the PIN pad to be used in unattended environments. The built-in battery maintains the cryptographic keys during power outage and storage.

Secure Communication and Operation

The 16-key PIN pad is ADA compliant and it offers tactile and audio feedback with each keystroke. PIN entry is encrypted and securely transmitted over the RS232 or USB 2.0 communication interface.

Features and Benefits:

- Payment Card Industry (PCI 3.x) Certified
- Meets ADA, ANSI and ISO standards for a PIN Entry Device (PED)
- 4 screw holes and built-in gasket for watertight mounting
- IP65 rated and NEMA 4 rated keypad
- Removal detection and tamper resistant
- Secure scheme for authorized activation/installation
- Encryption algorithms: DES and TDES for PIN encryption
- Clear and encrypted text input
- Key Management: Master/Session, DUKPT
- Rugged, Vandal Resistant for outdoor, indoor & unattended applications



IDTECH®
Value through Innovation

SmartPIN™ B100 Specifications IDPB-70X000

Electrical

Power Requirements: 5VDC +/- 10%, 180mA Max.
Interfaces: RS232 or USB

Environmental

Operating Temperature: -13°F to 158°F (-25°C to 70°C)
Storage Temperature: -22°F to 149°F (-30°C to 65°C)
Humidity: Maximum 95 % non-condensing

Reliability

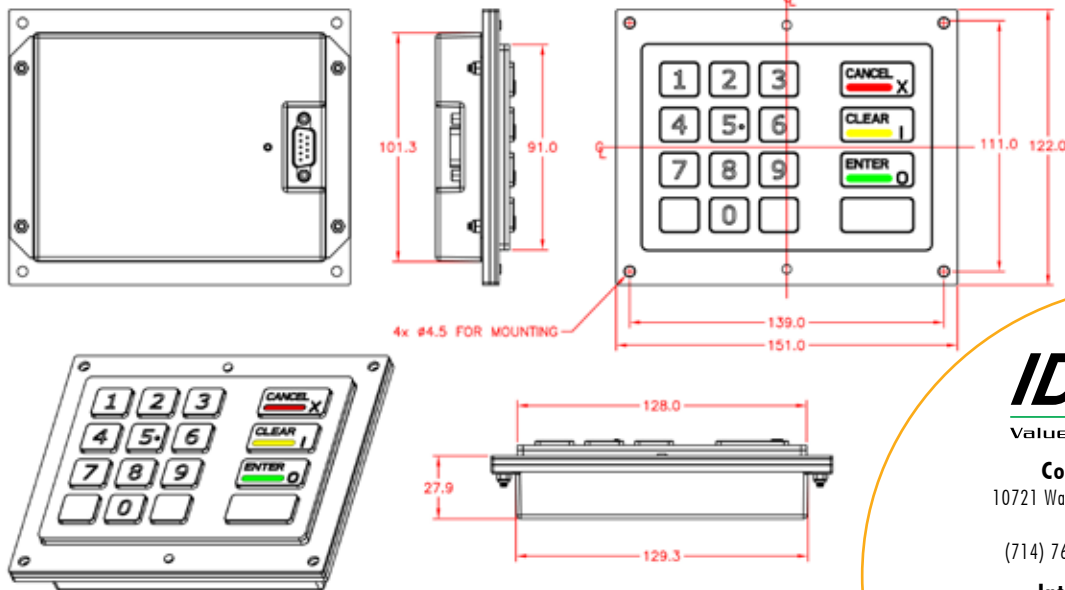
Operating Life: Minimum 2,000,000 operations
MTBF: 120,000 power-on hours calculated
ESD Immunity: Minimum 4KV direct contact & 8KV air discharge without resetting
Approvals: FCC and CE
Warranty: One year, parts and labor



Mechanical

Dimensions(L)x(W)x(H): 5.94 inches (151.0 mm) x 4.80 inches (122.0 mm) x 1.10 inches (27.9 mm)
Weight: 23.86 oz. (1.49 lbs)
Keys: Numeric (12), Operation (4)

Foot Print:



IDTECH®

Value through Innovation

Corporate Headquarters:

10721 Walker Street, Cypress, California 90630
www.idtechproducts.com
(714) 761-6368 sales@idtechproducts.com

International Sales Office

Canada & South America:

+ 450 465 5261 (Canada) robertop@idtechproducts.com

European Sales Offices:

emea@idtechproducts.com

ISO 9001 Certified